



CONNECT

World's first smart modular system

CATALOGUE

SMART SPACES





Explore the world
of next generation
system

About Connekt	From page 1	ABOUT
How it works	From page 3	HOW
Connekt roadmap	From page 4	RM
Frame	From page 5	FRAME
Modules	From page 7	MODULE
Switches	From page 9	SWITCH
Diffuser	From page 11	LIGHT
Wallbox	From page 13	WALL
Cover	From page 15	COVER
Smart Board	From page 17	SMART BOARD



About Connekt

Connekt is a smart modular system for electrical installations.

Smart?

Internet connectivity, remote management and data monitoring bring the Connekt system the possibility of drawing conclusions about electricity consumption.

Modular?

The system's modular design allows users to customize their setup based on specific needs, and to combine components of the system with each other.

Modularity

Modularity allows for easy replacement, upgrade, or adaptation without the need to alter the entire structure of the system. If a problem occurs with one module, the rest of the system can continue to function normally, which reflects Connekt's reliability. Due to the modularity of the system, installation is faster and maintenance is easier.

Programmable Ambient Lighting

It empowers users with the possibility of adjusting the lighting to their mood and the ease of noticing the socket. It also enhances the aesthetic appeal of the space and saves energy compared to alternative lighting methods.



What else...?



Time-and-money-saving

Connekt system makes it easy for users to discover the biggest household electricity consumers but also hidden ones. What is more, virtual wireless switches eliminate the need for complex electrical installations.

Digital Twin

The application maps the real environment into a virtual one, therefore it is possible to monitor what is happening with the system in real time.

Dynamic Device Control

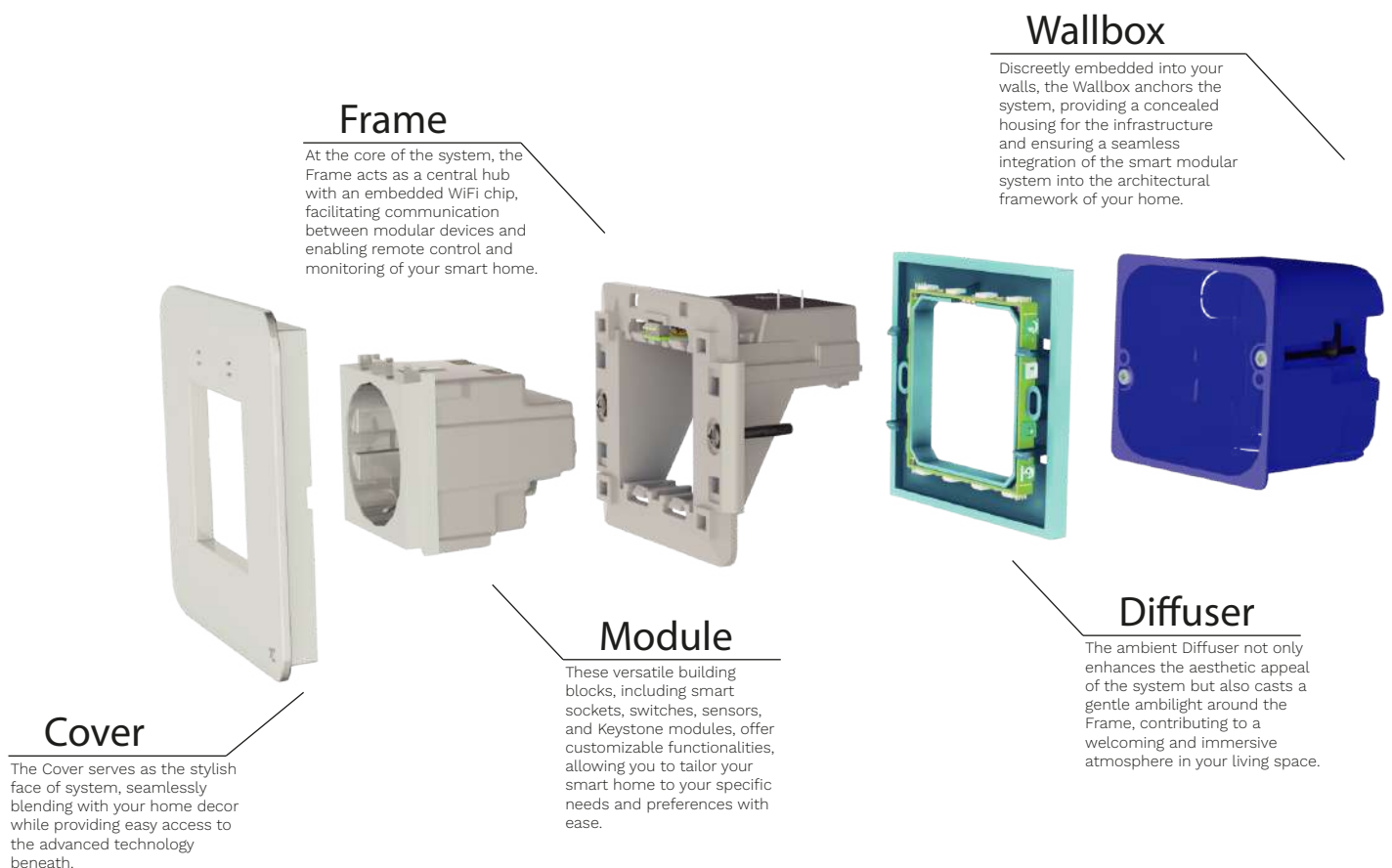
Users have the ability to program virtual switches and sensors to control a desired number of external devices connected to smart sockets, as well as devices linked to the smart board. Therefore, Connekt system provides users with the possibility of personalized automation of their environment

How it works?

Our Smart Modular System with WiFi Management seamlessly integrates cutting-edge technology into your living space. The central Frame, equipped with a powerful WiFi chip, acts as the brain, connecting various Modules for customized functionalities.

The sleek Covers elegantly conceal your Modules, while the discrete Wallbox anchors the system within your walls.

The ambient Diffuser casts a gentle glow, enhancing your surroundings. Through WiFi connectivity, effortlessly control and monitor your smart home, transforming daily living into a personalized and responsive experience.



Connekt roadmap



SMART LINE

Innovative, electronic features for seamless integration and remote control, elevating your home with cutting-edge smart technology.

REGULAR LINE


Reliable, traditional functionality without advanced electronic features, providing simplicity and performance.

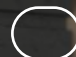
UNIVERSAL LINE

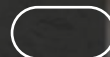
Versatile products, such as the Wallbox, designed for seamless integration into both smart and regular systems, ensuring adaptability and future-proofing.

Sizes



 1M Size - 1 module

 2M Size - 2 modules

 4M Size - 4 modules

 7M Size - 7 modules

Frame

The Frame serves as the central hub in the Connekt System, housing and connecting various modules. Enhanced by a built-in WiFi chip, it enables seamless communication among devices, allowing users to remotely control and monitor their smart home with ease. The Frame blends aesthetic appeal with technological prowess, making it the core element in creating a connected and automated living space.



Screws for wallbox

All Frames come with screws that fit into Wallbox. Using diffuser or not, screws will fit inside.

Two wires for powering up

The Frame requires only two wires, L and N, to power up the system.

WiFi



The Frame is equipped with an integrated WiFi chip, acting as the system's communication backbone. This feature enables robust connectivity, allowing for seamless communication between modules and facilitating remote control and monitoring of smart devices within the Connekt System.

Only one unit

1

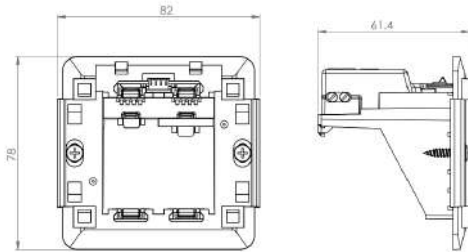
The Frame takes connectivity to the next level by featuring an integrated WiFi chip, ensuring that only one unit needs to be connected to the internet. This streamlined design not only simplifies the setup process but also serves as the central command center, allowing for effortless remote control and monitoring of the entire Connekt System.

SMART Frame

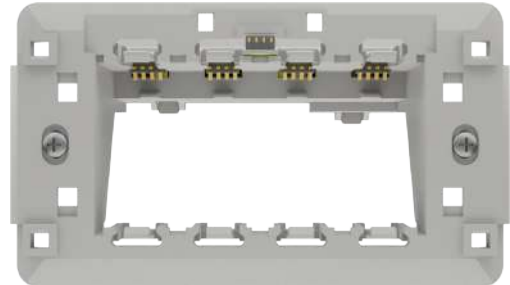
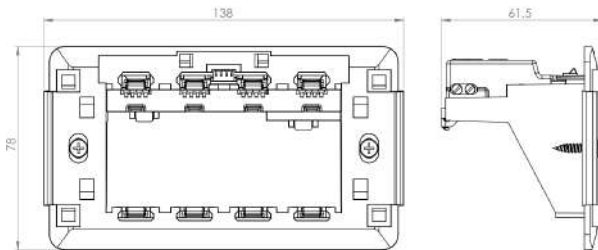
SMART

- Frame with smart electronics
- For Universal Wallbox
- Compatible with all Covers of the same dimensions as the Frame (Smart Cover, Regular Cover)
- Sizes: 2M, 4M

Size: 2M



Size: 4M

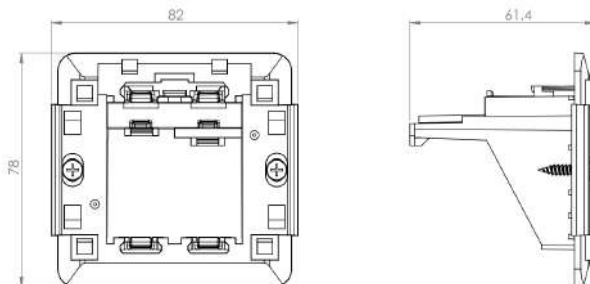


REGULAR Frame

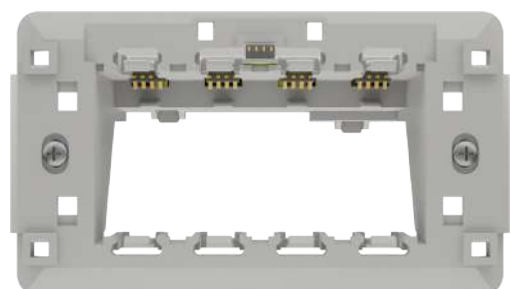
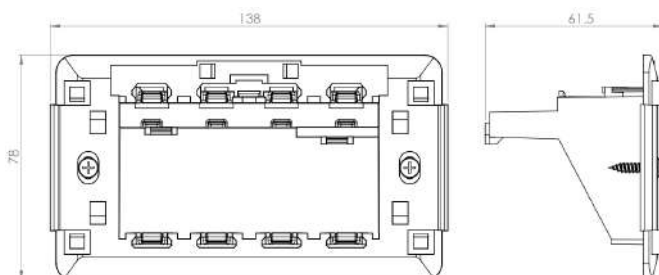
REGULAR

- Frame for regular systems
- For Universal Wallbox
- Compatible with all Covers of the same dimensions as the Frame (Smart Cover, Regular Cover)
- Sizes: 2M, 4M

Size: 2M



Size: 4M



Modules

The Modules in Connect System redefine convenience and customization. These versatile building blocks, ranging from smart sockets to switches, sensors, and Keystone modules, empower you to tailor your home environment effortlessly. With advanced functionalities, these Modules seamlessly integrate into the system, offering not just control but a personalized, intelligent living experience that adapts to your unique preferences. Welcome a world where every Module transforms your living space into a smart, responsive haven.

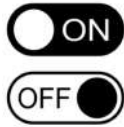


Smart Socket

Module



Power
measurement



Remote
On/Off

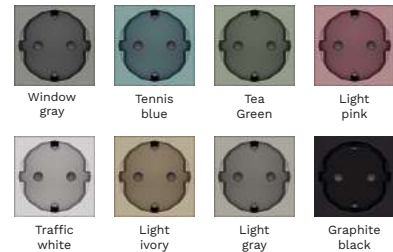
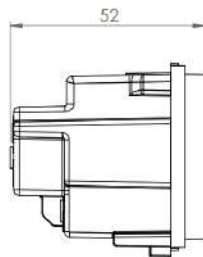
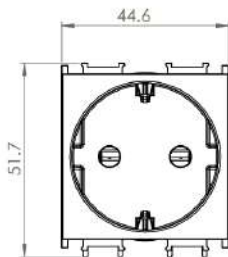


2M type F SMART Socket

SMART

- European standard for a Smart Socket
- Compatible with Frames of all sizes (2M, 4M...)
- Size: 2M

Size: 2M

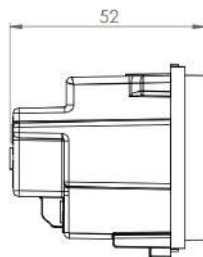
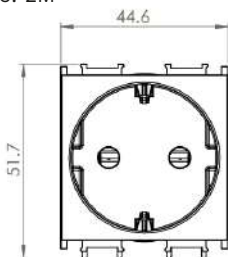


2M type F REGULAR Socket

REGULAR

- European standard for a Regular Socket
- Compatible with Frames of all sizes (2M, 4M...)
- Size: 2M

Size: 2M



Smart Switch

Classic



Wires
required



Remote
On/Off

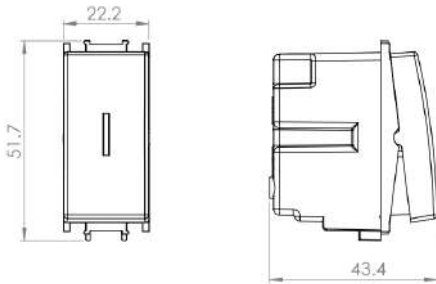


1M SMART Switch one pole

SMART

- Smart Switch with one state
- Compatible with Frames of all sizes (2M, 4M...)
- Wired connection
- Size: 1M

Size: 1M

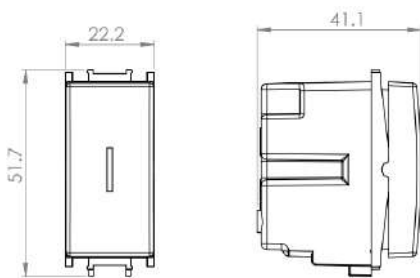


1M SMART Switch two poles

SMART

- Smart Switch with two states
- Compatible with Frames of all sizes (2M, 4M...)
- Wired connection
- Size: 1M

Size: 1M



Smart Switch

Virtual



Wireless



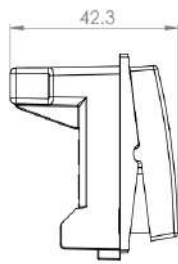
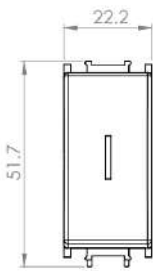
Remote
On/Off

1M Smart Switch virtual one pole

SMART

- Smart Switch with one state
- Compatible with Frames of all sizes (2M, 4M...)
- Virtual connection with app
- Size: 1M

Size: 1M

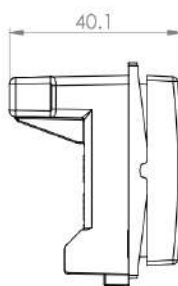
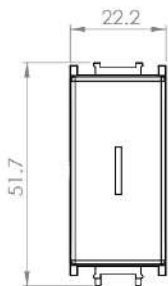


1M Smart Switch virtual two poles

SMART

- Smart Switch with two states
- Compatible with Frames of all sizes (2M, 4M...)
- Virtual connection with app
- Size: 1M

Size: 1M



Connekt and illuminate your space

At the forefront of smart living, Connekt seamlessly integrates your diverse smart home devices, providing a centralized hub for effortless control and connectivity.

Illuminate your space with the Diffuser: Step into an innovative realm where ambiance takes center stage. Our Diffuser redefines your space through transformative ambient lighting solutions. Immerse yourself in a gentle and customizable glow, allowing you to craft an atmosphere that aligns with your mood and preferences. With the Diffuser, your living space becomes a canvas of personalized illumination, enhancing the overall harmony and comfort of your home.



Color adjustment

Effortlessly tailor your environment with precision through our intuitive color adjustment feature, putting the perfect hue for every moment at your fingertips.



Night light

Transform your space into a soothing haven with our night light feature, providing a gentle and comforting glow for a tranquil night's rest.



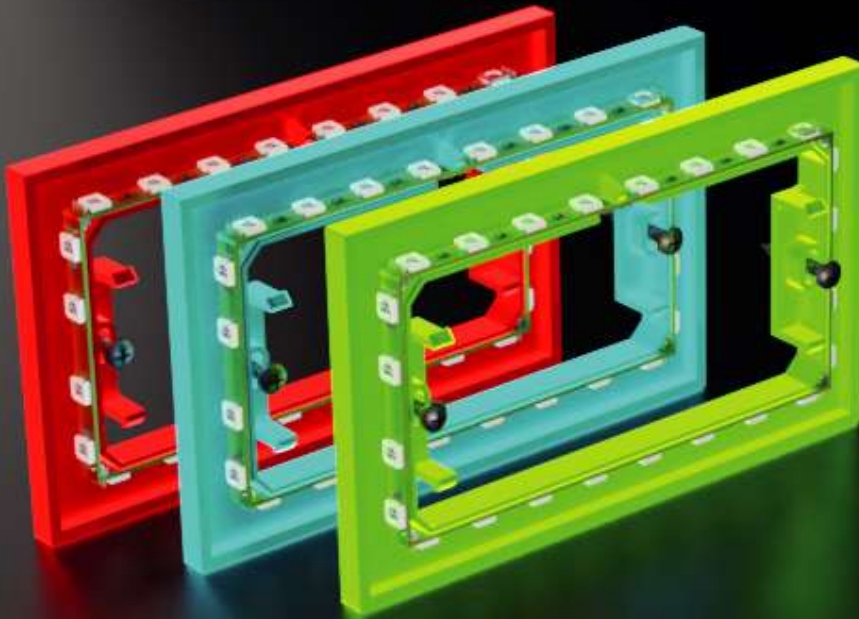
Modern design

Embrace sophistication and contemporary elegance with our smart modular system's modern design, seamlessly blending cutting-edge technology with sleek aesthetics to elevate your living space.



Diffuser

Ambilight



Ambilight

Elevate your living experience with Ambilight, casting a captivating and customizable glow that transforms your home into a dynamic and immersive haven of ambiance.



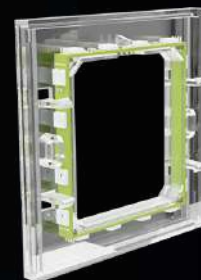
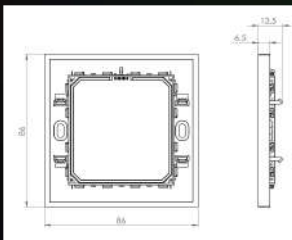
Full color range RGBW

SMART Diffuser

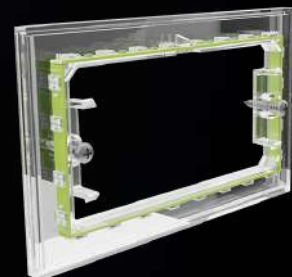
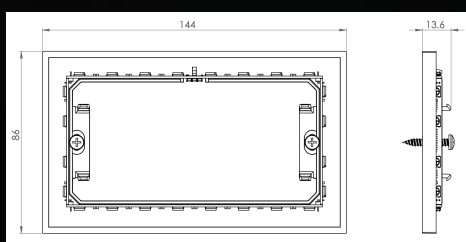
SMART

- Programmable ambient lighting
- Compatible with all Frames of the same dimensions as the Diffuser (2M, 4M...)
- Optional component
- Sizes: 2M, 4M

Size: 2M

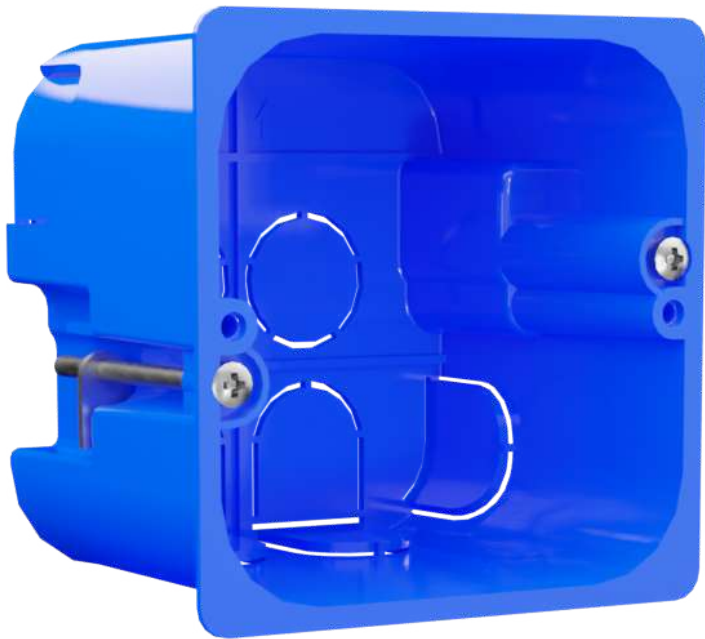


Size: 4M



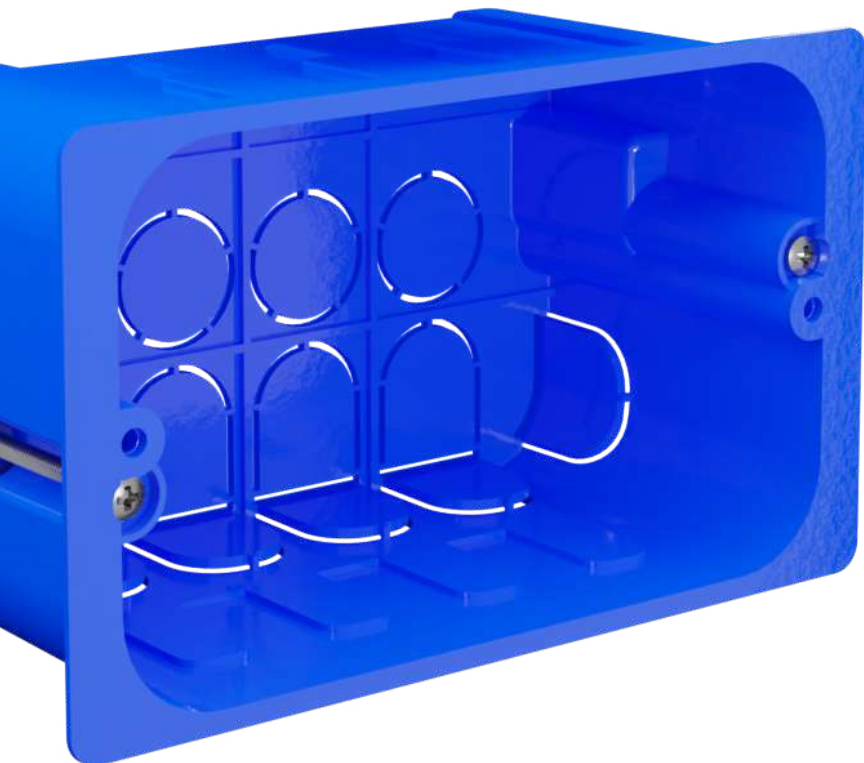
Wallbox

The Wallbox, an unobtrusive yet integral element, seamlessly embeds into your walls, serving as the concealed anchor for the Connect System. Its universal design accommodates both smart and regular configurations, ensuring a discreet and adaptable infrastructure that harmonizes with your home's architecture while facilitating a seamless integration of technology.



For use with hollow walls

A hollow wall is a construction type characterized by a space or cavity between two surfaces, commonly used in drywall systems for lightweight and cost-effective structures, allowing for easy installation of utilities like wiring and plumbing within the concealed space.



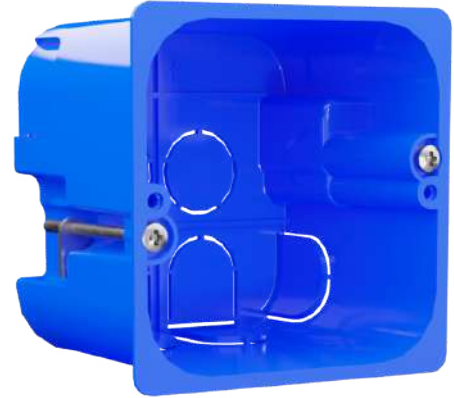
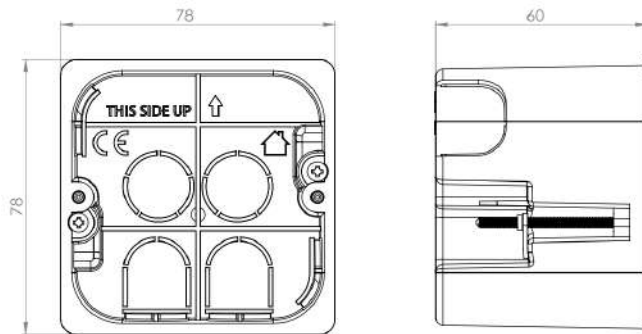
Easy to install

Effortless installation meets modern design with our system—designed for simplicity, making it easy for you to create a smart and stylish home.

2M Wallbox

UNIVERSAL

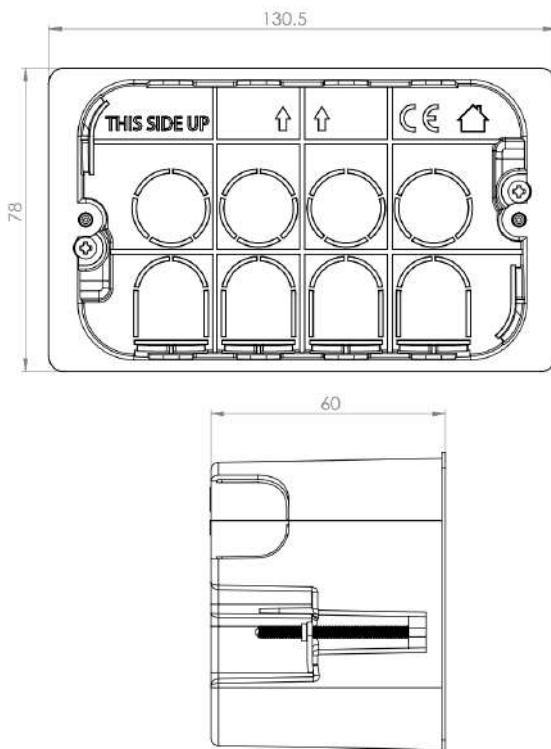
- Wallbox for use with hollow walls
- Comes with two screws
- Compatible with all Frames of the same dimensions as the Wallbox (Smart Frame, Regular Frame)
- Size: 2M



4M Wallbox

UNIVERSAL

- Wallbox for use with hollow walls
- Comes with two screws
- Compatible with all Frames of the same dimensions as the Wallbox (Smart Frame, Regular Frame)
- Size: 4M



Cover



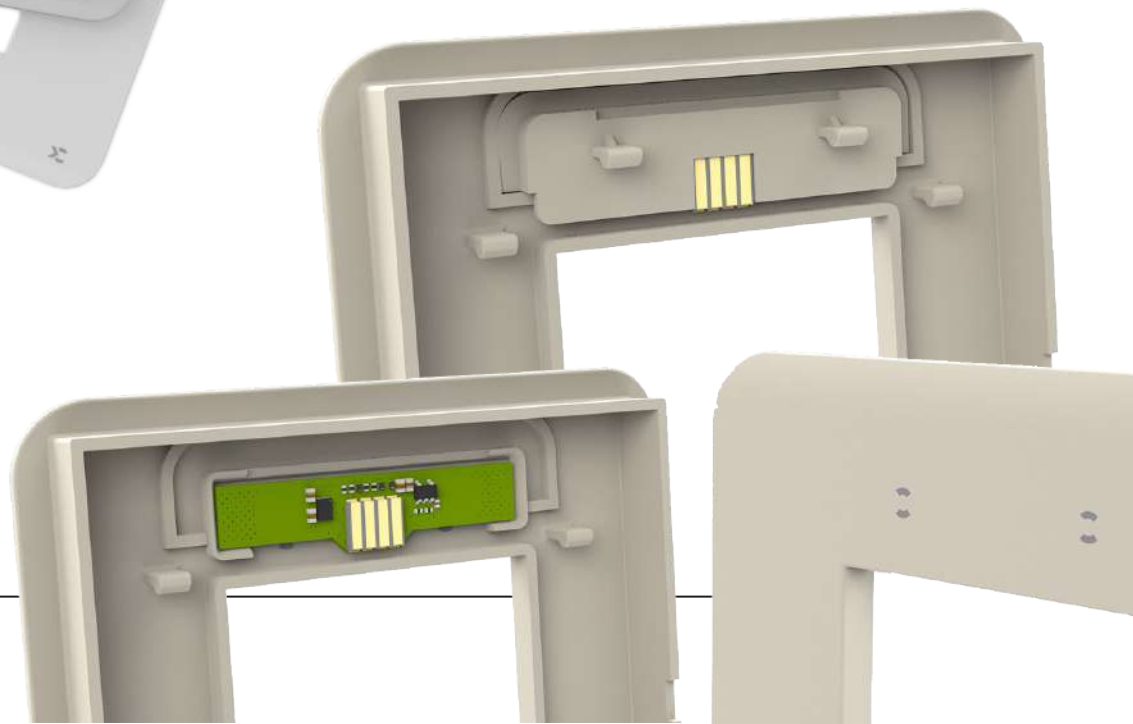
Our Covers with touch-sensitive buttons redefine the interface of convenience in the Smart Modular System. Featuring touch-sensitive controls, these covers offer an intuitive and seamless interaction experience. With a variety of colors and sizes available, you have the freedom to customize your home aesthetic while enjoying the tactile sophistication of touch buttons, blending cutting-edge technology with personalized style.

Touch-sensitive buttons

Our touch-sensitive buttons offer a sleek and modern interface, allowing you to effortlessly control your devices with a simple touch. Designed for intuitive interaction, these buttons provide a seamless and stylish way to command your connected environment.

Wide range of colors

Choose from a vibrant spectrum of colors to personalize your space with our smart modular system's covers. Whether you prefer a bold statement or a subtle blend, the range of colors ensures that your smart home not only functions seamlessly but also complements your unique style.

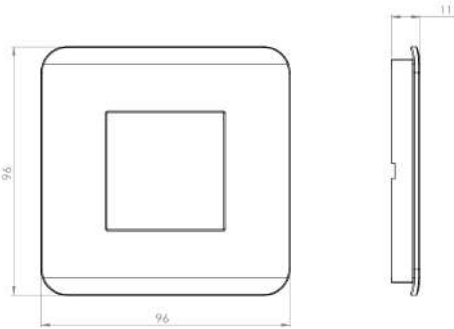


SMART Cover

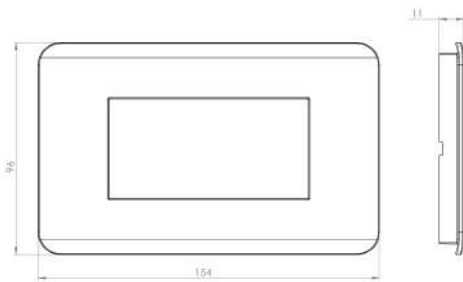
SMART

- Smart Cover with touch-sensitive buttons
- Compatible with all Frames of the same dimensions as the Cover (Smart Frame, Regular Frame)
- Easy removable
- Size: 2M, 4M

Size: 2M



Size: 4M

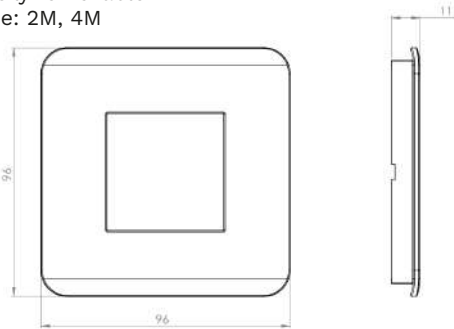


REGULAR Cover

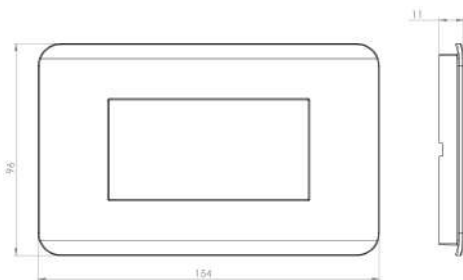
REGULAR

- Regular Cover without touch-sensitive buttons
- Compatible with all Frames of the same dimensions as the Cover (Smart Frame, Regular Frame)
- Easily removable
- Size: 2M, 4M

Size: 2M



Size: 4M



SMART Board

The Smart Board enables control of devices that require phase interruption. It functions as a digital transformer, upgrading conventional devices into smart ones. Its seamless integration with the application empowers users to effortlessly control and monitor their devices via their mobile devices.



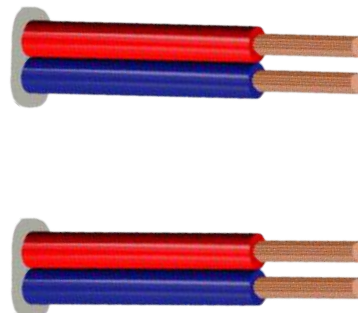
Remote On/Off



Transforming devices into smart devices.

Four wires for complete control

The Smart Board has four ports:
Nin – Neutral wire input
Nout – Neutral wire output
Lin – Phase input
Lout – Phase output



Button

The button is used to enter SETUP mode, where the user can add the device within the application.



CONNECT

Contact us for more information

Distributor for Croatia: Culmena Ltd.

Contact 1: Ivan Biondić, +385 99 490 8901, ivan.biondic@culmena.hr

Contact 2: Filip Badenić, +385 99 388 8100, Filip.Badenic@culmena.hr

Contact 3: Nedeljko Štefanić, +385 98 317 279, nedeljko.stefanic@culmena.hr

SMART SPACES 